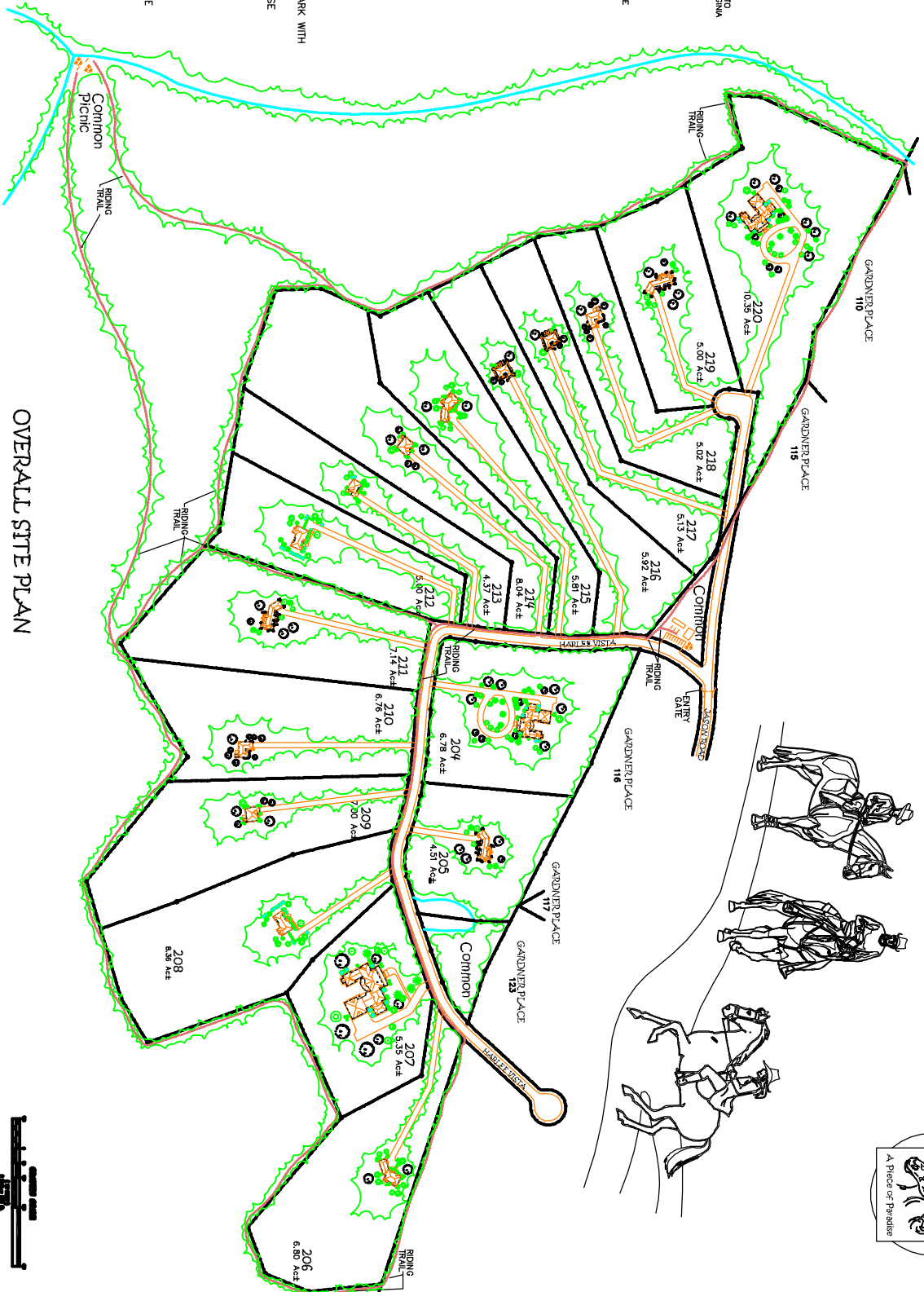
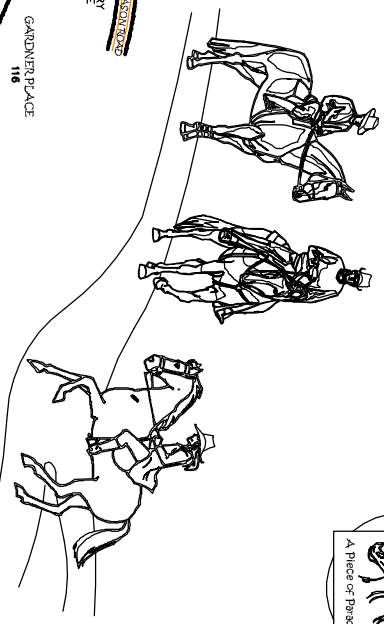


HIGH CLIFFS ESTATES - A GATED COMMUNITY



OVERALL SITE PLAN

FEATURES

- ** A PRIVATE WOODLAND GATED RETREAT
- ** IN THE TRIANGLE OF NASHVILLE, KNOXVILLE, & CHATTANOOGA
- ** EASY ACCESS FROM HIGHWAYS 75 - 111 - 40 - 127 & 30
- ** BREATHTAKING VISTAS OVERLOOKING SEQUOICHE VALLEY
- ** RIDING TRAILS THROUGHOUT THE SITE
- ** NEAR THE SOUTH ENTRANCE TO FALL CREEK FALLS STATE PARK WITH FALLS HIGHER THAN THE WINGRA FALLS
- ** NEAR TO THE FALL CREEK FALLS CHAMPIONSHIP GOLF COURSE
- ** COMMON AREAS AVAILABLE FOR USE
- ** FANTASTIC BLUFF TRACTS
- ** CITY WATER
- ** BEAUTIFUL WOODED HOME SITES
- ** ABUNDANCE OF WILDLIFE ON SITE
- ** LIVE IN PROTECTED PRIVACY IN THE MIDST OF NATURE WITH EASY ACCESS TO THE CULTURAL PLEASURES OF BIG CITY LIFE

